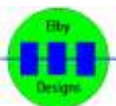




PSU-8 Micro-Dual Power Supply 12V Construction Guide

Revision 0.1
March 3rd, 2017

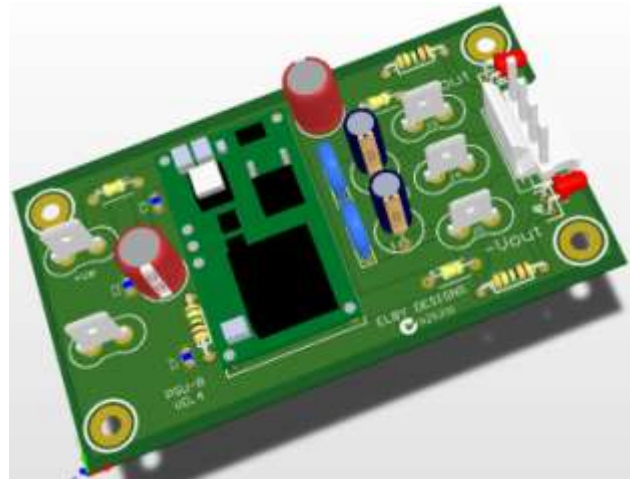


PSU-8 Micro-Dual Power Supply

Construction of the PSU-8 requires the assembly of 1 single board:-

Main Board - PSU-8 PCB ([3D Model](#))

Constructors should refer to the printed Component Overlay for any specific comments regarding the board assemblies, the Bill of Materials for the current value of all components and [General Construction Notes](#) document for general pcb assembly guidelines. You are advised to check all of these documents on our website to ensure you have the latest copy.



Assembly ([Component Overlay](#))

1. Fit all components to the main board except for D1, D2, J3, J4, J5 and J6. Start with the 3x surface-mount components C2, C3 and C7.
2. LEDs D1 and D2 are normally mounted directly on to the board but you may wish to panel mount them (will require a suitable lens mount or alternative style of LED)
3. You can mount both the spade outputs (J3, J4 and J5) and the MTA connector (J6) or just one of these options. For use with the ED704 Passive Busboards and similar 3rd-party passive busboards you will find the spade option more common. The MTA connector is more common in 4U and 5U format systems.

Calibration

The PSU-8 does not need any calibration or set-up.

Connections

Power in to the PSU-8 is via the two spade connectors J1 (+12V) and J2 (0V) while the output to your system is via either J3 (+12V), J4 (0V) and J5 (-12V) and/or J6.

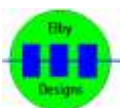
Options

There are 2 main build options for the PSU-8:- the PSU-8A and the PSU-8B, where the only change is the choice of U1 which determines the maximum -12V loading.

Wiring Chart

PCB Terminal	Colour	Length (cm)	Connector Terminal
J1 : 0V	Black	6	X1 - Barrel
J2 : +Vin	Red	6	X1 - Tip
J3 : +12V	Red	6	X2 - Pin 4
J4 : 0V	Black	6	X2 - Pin 2 & Pin 3
J5 : -12V	Blue	6	X2 - Pin 1

[Wiring Guide](#)



ELBY Designs - Laurie Biddulph

9 Follan Close, Kariiong, NSW 2250, Australia

elby-designs@bigpond.com

<http://www.elby-designs.com>

PSU-8 Micro-Dual Power Supply

Enclosure

There are 4 main parts to the enclosure:-

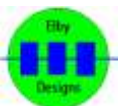
- 1) Power IN panel
- 2) Power OUT panel
- 3) Main case
- 4) Lid



- Start assembly by preparing the Power IN connector and Power Out connector
- Attach the DC connector to the Power IN panel.
- Attach the MIC connector to the Power OUT panel
- Attach and secure the Power IN panel to the main case
- Slide the PSU-8 PCB Assembly in to the main case
- Plug the Power IN leads to their respective spades on the PSU-8
- Plug the Power OUT leads to their respective spades on the PSU-8
- Slide in the Lid
- Carefully forming the leads so that they tuck in above the PSU-8 PCB assembly, attach the Power IN panel to the main case



PSU-8 Mounting Details



ELBY Designs - Laurie Biddulph

9 Follan Close, Kariiong, NSW 2250, Australia

elby-designs@bigpond.com

<http://www.elby-designs.com>