

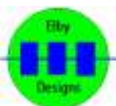


EURO-5V – 5V Power Adaptor

Construction Guide

Revision 1.4

December 10th, 2018



ELBY Designs - Laurie Biddulph

9 Follan Close, Kariong, NSW 2250, Australia

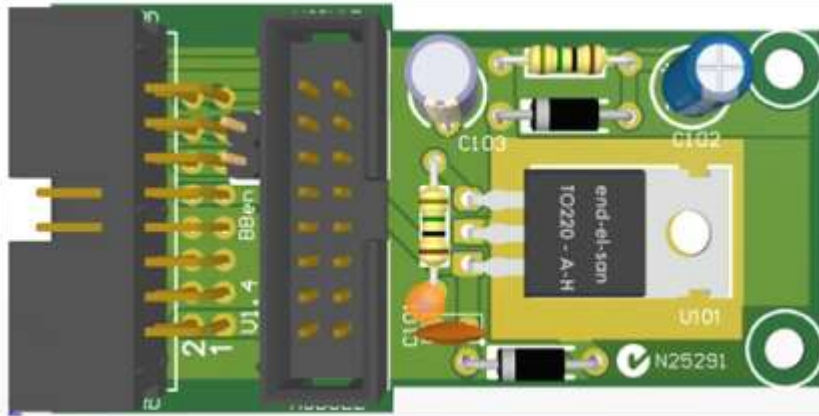
elby-designs@bigpond.com <http://www.elby-designs.com>

EURO-5V - 5V Power Adaptor

Construction of the EURO-5V requires the assembly of 1 board:-

1. Main Board: EURO-5V PCB ([3D Model](#))

Constructors should refer to the printed Component Overlay for any specific comments regarding the board assemblies, the Bill of Materials for the current value of all components and [General Construction Notes](#) for general pcb assembly guidelines. You are advised to check all of these documents on our website to ensure you have the latest copy.

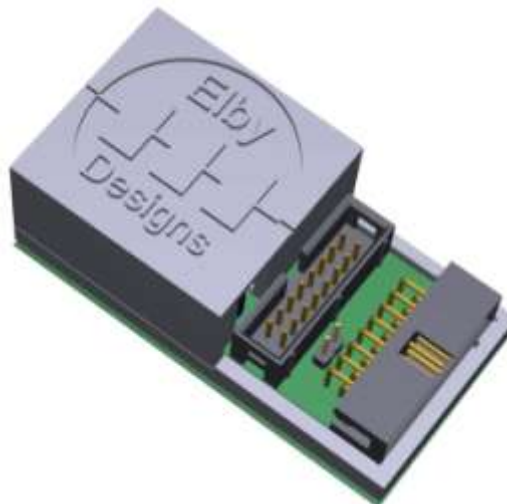


[Click for PCB Overlay](#)

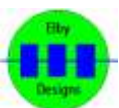
1. Fit all components to the boards following normal assembly guidelines, ensuring that the taller components are kept close to the pcb to facilitate fitting the lid
2. Place the PCB assembly on to the base plate, locate the cover and secure using the screws provided.

Calibration

The EURO-5V does not require any calibration or set-up.



[Assembled Unit](#)



ELBY Designs - Laurie Biddulph

9 Follan Close, Kariong, NSW 2250, Australia

elby-designs@bigpond.com <http://www.elby-designs.com>