

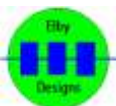


## CGS60 Stomp Box Adaptor

### Construction Guide

Revision 0.0

May 30<sup>th</sup>, 2019



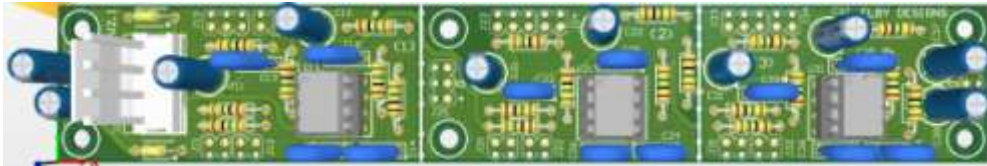
**ELBY Designs - Laurie Biddulph**

9 Follan Close, Kariiong, NSW 2250, Australia

[elby-designs@bigpond.com](mailto:elby-designs@bigpond.com)

<http://www.elby-designs.com>

# CGS60 Stomp Box Adaptor

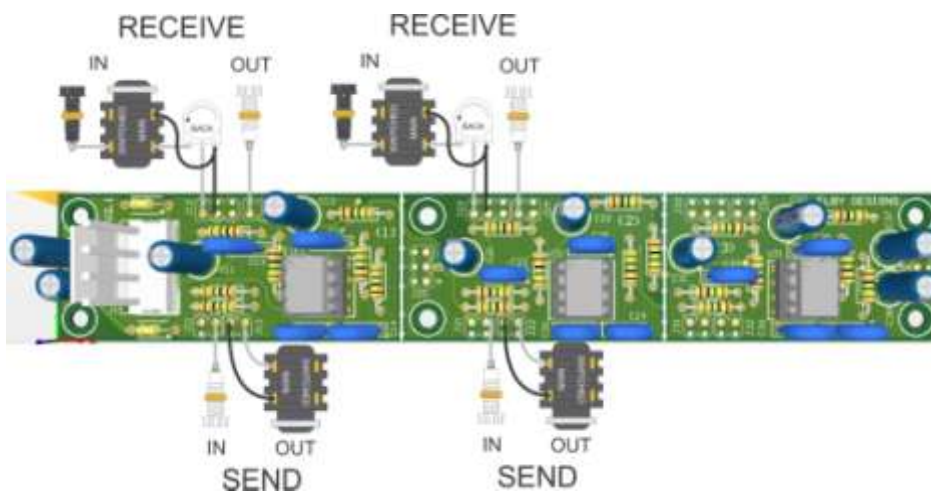
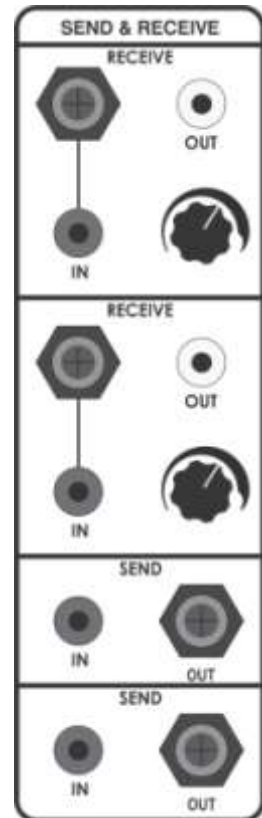


## [3D Model](#)

Constructors should refer to the printed [Component Overlay](#) along with the [PCB Bill of Materials](#) for the current value of all components and [General Construction Notes](#) for general PCB assembly guidelines. You are advised to check all of these documents on our website to ensure you have the latest copy.

The CGS60 PCB contains 3 separate sections each providing an 'input' section and an 'output' section. The PCB can be cut to allow the sections to be located individually or to remove unused section. Carefully cut along the white separating lines using a fine hacksaw. Power connections for sections (2) and (3) are provided at J25 and J35 respectively if you need to use the removed sections.

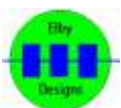
The [preamplifier of the stomp box adaptor](#) is a basic non-inverting amplifier with an AC gain of 20, and suppression capacitors as needed. The input impedance is approximately 150k. The AC gain can be reduced if needed by increasing the value of R15/R25/R35. For example, a 1k resistor in this position would give a gain of 10. R12/R22/R32 of the input divider would need to be increased to 2k2 to keep the drop and gain matched.



*Example wiring as a dual Send & Receive – [click for larger image](#)*

## Calibration

The CGS60 does not require any calibration or set-up

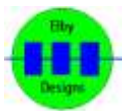


**ELBY Designs - Laurie Biddulph**

9 Follan Close, Kariiong, NSW 2250, Australia

[elby-designs@bigpond.com](mailto:elby-designs@bigpond.com)

<http://www.elby-designs.com>



**ELBY Designs - Laurie Biddulph**

9 Follan Close, Kariong, NSW 2250, Australia

[elby-designs@bigpond.com](mailto:elby-designs@bigpond.com) <http://www.elby-designs.com>