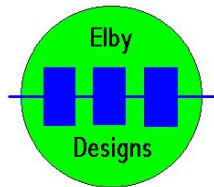
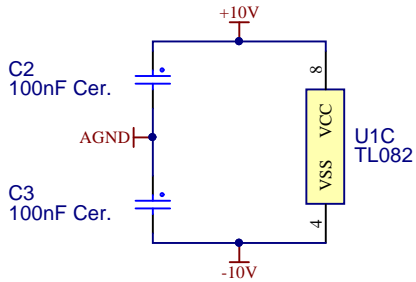


Change R1 & R6 for alternate power rails  
 For 12V, R1 = R6 = 95K3  
 For 15V, R1 = R6 = 127K



9 Follan Close  
 Kariong  
 NSW 2250  
 Australia

**IMPORTANT NOTICE:**  
 Information disclosed by this drawing is the property of ELBY Designs.  
 Duplication or manufacturing rights granted by written permission only.

### 3U Octave Transposer

Size A4	FCSM No. 9/08/2016	DWG No. transpose.schdoc	Rev 5
Scale	Laurie Biddulph	Sheet 1 of 1	

1

2

3

4

5

6

7

8

A

A

B

B

C

C

D

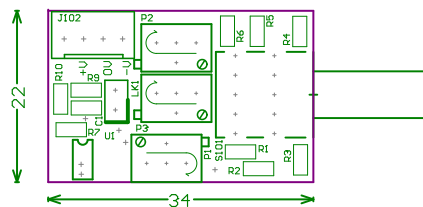
D

E

E

F

Lead-free HASL - RoHS compliant  
 FR4, 1.6mm thick  
 (Matt) White silk-screen to 1 side  
 Silk-screen quality is important  
 Matt Blue solder-mask to 2 sides  
 Finished external copper weight 1oz  
 All vias to be tented (both sides)  
 All holes are 'finished' sizes  
 PCB to be supplied loose (not panellised)



Elby Designs

Kariong, NSW 2250  
 Australia

[www.elby-designs.com](http://www.elby-designs.com)

3U Transposer

PCB Details

All dimensions in millimeters  
 unless stated otherwise.

(A4) Not to scale

Rev: 5

Date: 9/08/16

1

2

3

4