



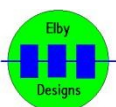
CGS337 CV Clusterer

Construction Guide

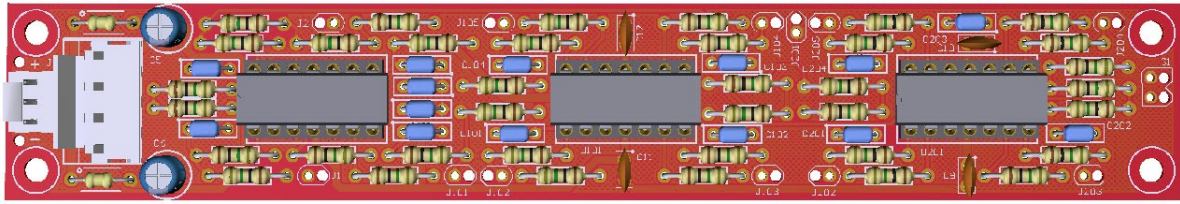
Revision 2.1

PCB Revision V2.1

June 7, 2021



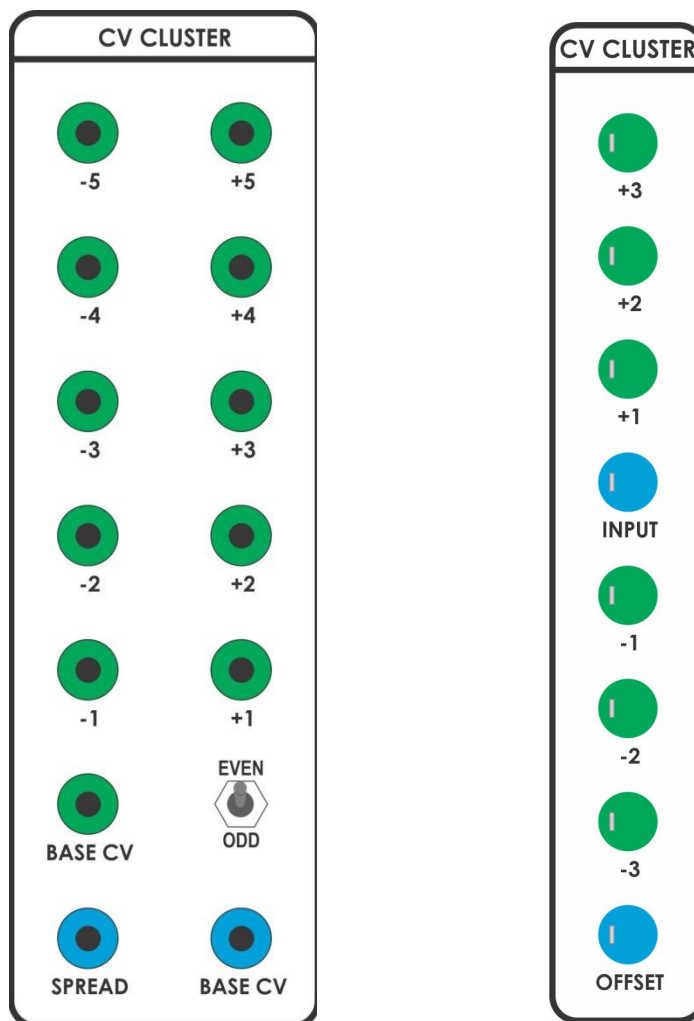
CGS337 CV Cluster



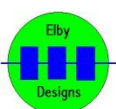
[3D Model](#) [Schematics](#)

Constructors should refer to the printed [Component Overlay](#) along with the [PCB Bill of Materials](#) for the current value of all components and [General Construction Notes](#) for general PCB assembly guidelines.

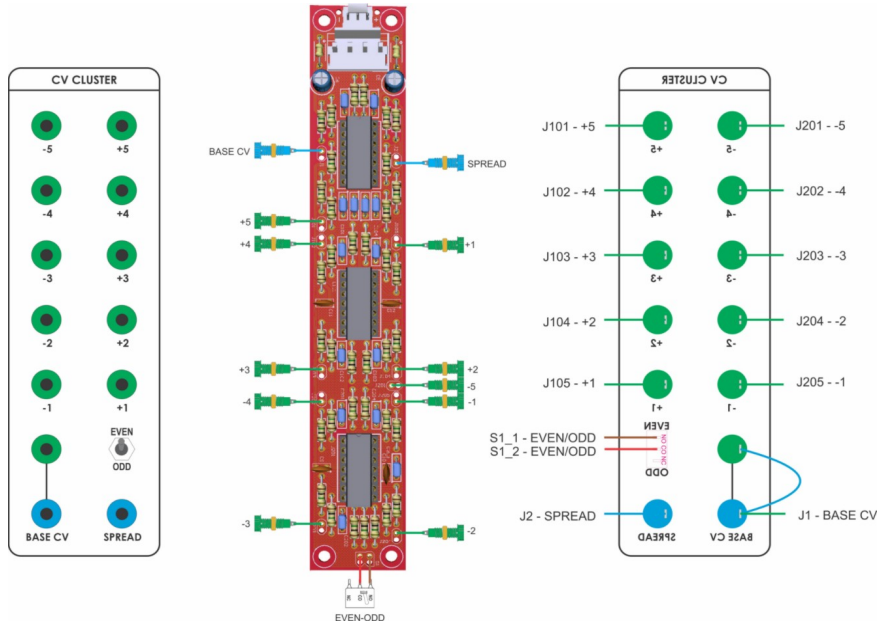
The CGS337 does not require any calibration.



Full Panel ----- BoCGS Panel

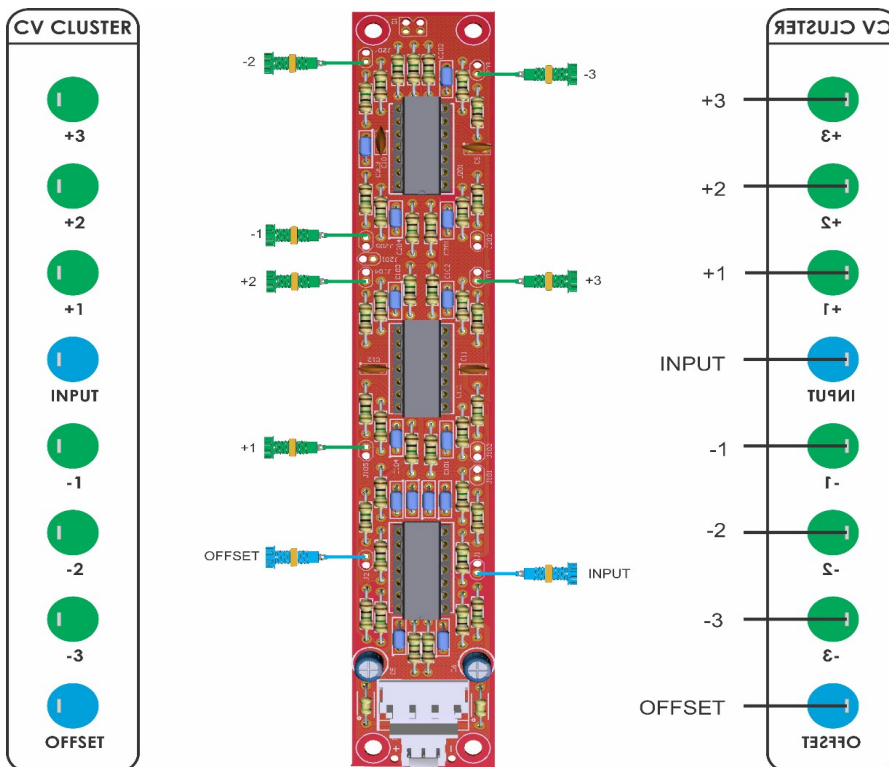


CGS337 CV Cluster



[CGS337 wiring – click for larger image](#)

BoCGS Panel Bill of Materials



[CGS337 BoCGS wiring – click for larger image](#)

BoCGS Panel Bill of Materials

