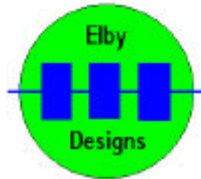
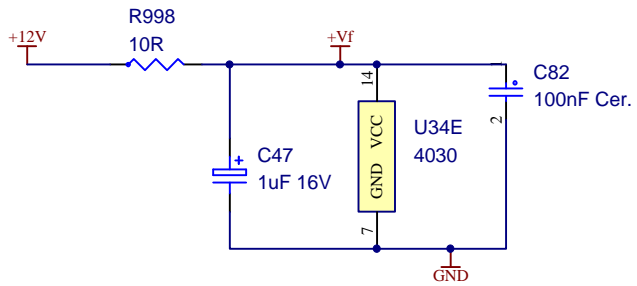


Using $CLK = 1 / 2.2RC$, $CLK \approx 38kHz$

R899 not on PCB



9 Follan Close
Kariong
NSW 2250
Australia

Transcendent 2006
Based on an original design in ETI.
Copyright now owned by Everyday Practical Electronics (www.epemag.co.uk)

Noise Generator

| | | | |
|------------|------------------------|-------------------------|-----------------|
| Size A4 | FCSM No. 14/09/2006 | DWG No. noise.schdoc | Rev 1 |
| Scale | Laurie Biddulph | | Sheet 5 of 9 |